

+ 1,000 – 3,500 SF OFFICE AVAILABLE

- 18" Ceiling Heights
- Drive in access
- Fully Sprinkled buildings
- Convenient location on MN HWY 100

OUTDOOR STORAGE, WAREHOUSE, OFFICE

4810 Lilac Drive

For information regarding leasing or renovations at 4810 Lilac Drive, please contact:

Joe Klein 612-623-2470
JoeK@hillcrestdevelopment.com

or
Charlie Nestor 612-623-2475
CharlieN@hillcrestdevelopment.com

hillcrestdevelopment.com



4810 Lilac Drive
Brooklyn Center, MN 55429

+ 1,000 – 3,500 SF OFFICE AVAILABLE

- 18" Ceiling Heights
- Drive in access
- Fully Sprinkled buildings
- Convenient location on MN HWY 100

OUTDOOR STORAGE, WAREHOUSE, OFFICE

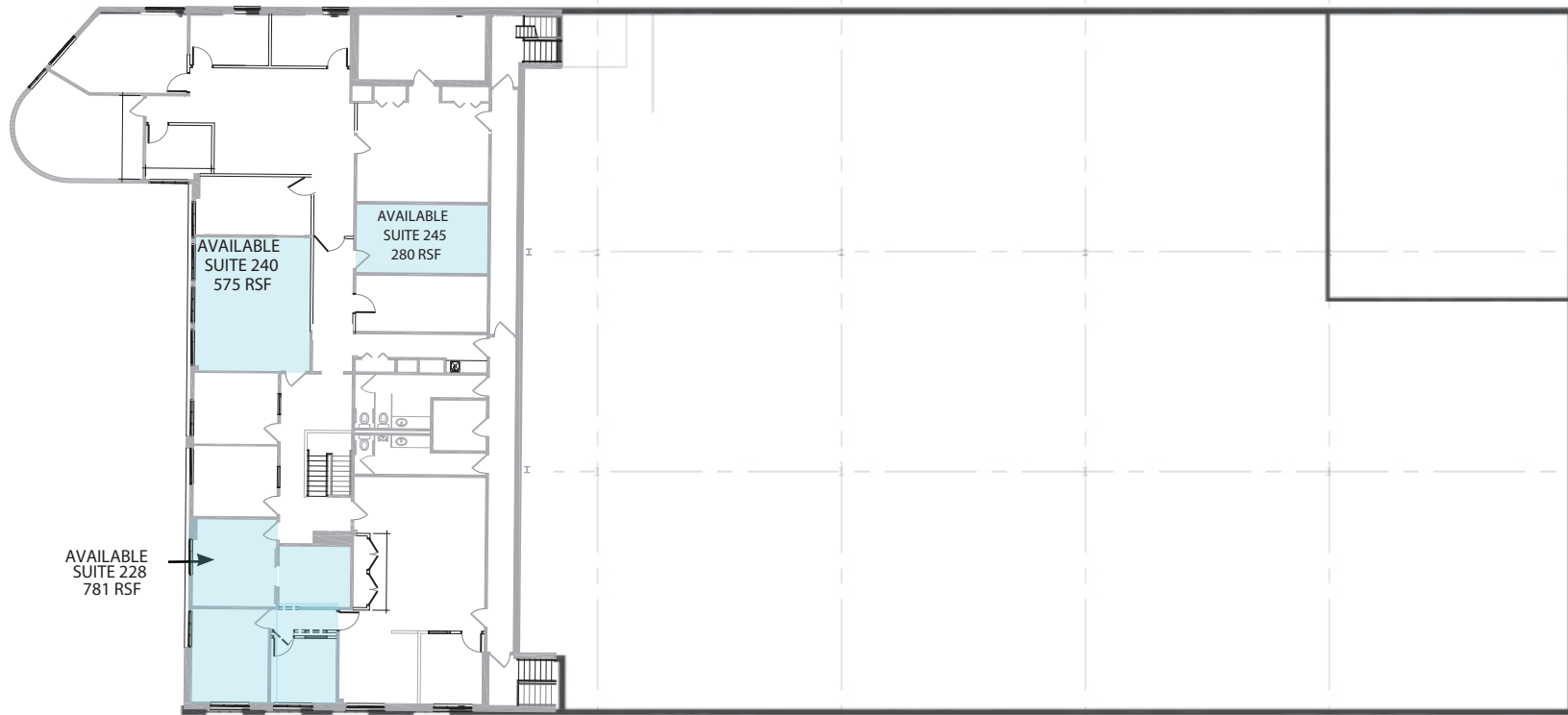
4810 Lilac Drive

For information regarding leasing or renovations at 4810 Lilac Drive, please contact:

Joe Klein 612-623-2470
JoeK@hillcrestdevelopment.com

or
Charlie Nestor 612-623-2475
CharlieN@hillcrestdevelopment.com

hillcrestdevelopment.com



SECOND FLOOR

4810 Lilac Drive
Brooklyn Center, MN 55429