



## 4810 LILAC DRIVE | BROOKLYN CENTER



4810 Lilac Drive is a 39,000 square foot, two story office/industrial building with outdoor storage conveniently located just off of Highway 100 near I-694 in Brooklyn Center. Join our current tenants in the manufacturing, distribution and landscape industries at this well located & economical property.



### CURRENT OFFICE VACANCIES

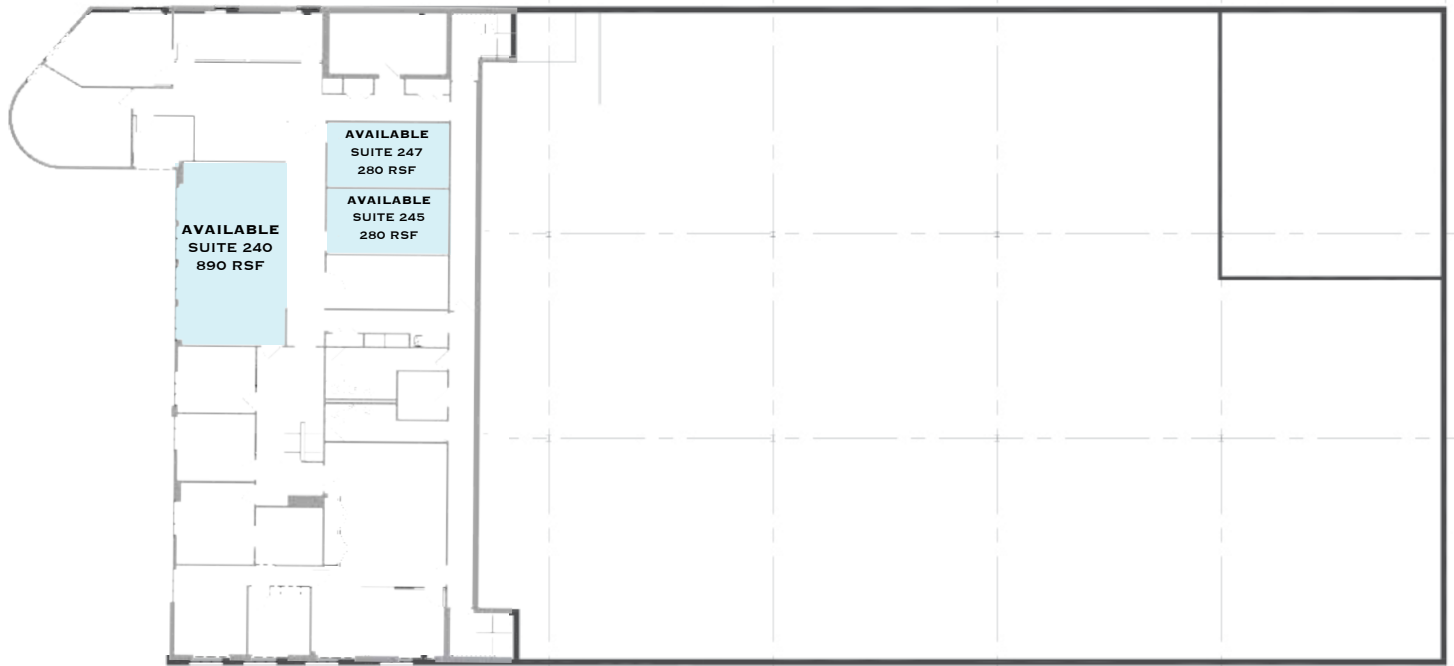
SUITE 240 | 890 SF  
SUITE 247 & 245 | 280 SF

- + BUILT-TO-SUIT AND CUSTOMIZED SPACES
- + IMMEDIATE AVAILABILITIES AND QUICK OCCUPANCY
- + FLEXIBLE LEASE TERMS
- + AMPLE PARKING

**OFFICE  
RENTAL  
RATE  
\$12.00  
PER SF  
GROSS +  
UTILITIES**



**HILLCREST**  
DEVELOPMENT, LLLP



**SECOND FLOOR**

LEARN MORE ABOUT 4810 @

[HILLCRESTDEVELOPMENT.COM/4810-LILAC-DRIVE](http://HILLCRESTDEVELOPMENT.COM/4810-LILAC-DRIVE)

**OR CONTACT OUR DEVELOPMENT &  
LEASING TEAM TO SET UP A PRIVATE TOUR!**

**CHARLIE NESTOR**

CHARLIEN@HILLCRESTDEVELOPMENT.COM

DIRECT: 612.623.2475

CELL: 612.220.7356

**JOE KLEIN**

JOEK@HILLCRESTDEVELOPMENT.COM

DIRECT: 612.623.2470

CELL: 612.799.4145

**HILLCREST**

DEVELOPMENT, LLLP

HILLCRESTDEVELOPMENT.COM